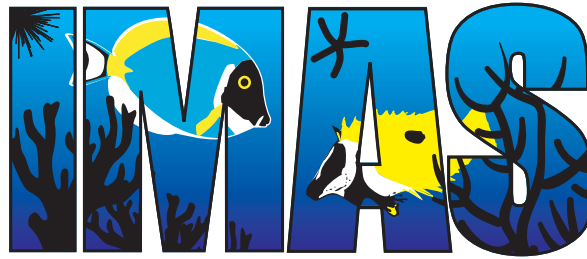


Idaho
Marine
Aquarium
Society



October
2004

Newsletter

Planning for our Annual Christmas Party and Raffle

Last year our Christmas party and raffle was a huge success, no one left empty handed. This year is looking to be even better, with a few improvements. All IMAS members will receive 3 free raffle tickets just for coming. Also, this year you will be able to select the particular items that you want. This gives everyone more of a chance of winning items that suit their individual needs. We are accepting donations now. As of this printing we would like to thank these local sponsors for donating towards this annual event:

Fish Aquariums & Stuff, Garden Center West, Jen's Saltwater Haven, & Petco.

Watch for the IMAS posters in the local fish stores for more sponsors and info.

This Issue

Articles	pg. 2-3
Club Info	pg. 1-3
Events	pg. 1
Meetings	pg. 1-2



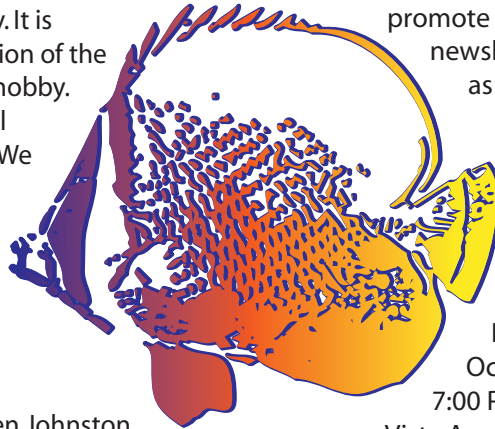
Club Info

Thanks for your interest in the Idaho Marine Aquarium Society. We exist to promote and grow the marine aquarium hobby in the Treasure Valley. It is organized as a loose fraternal association of the people that help each other with the hobby. Activities include monthly educational meetings, newsletters and tank tours. We are also proud to announce our affiliation with MASNA!

IMAS Officers:

President: Scott Morrell
Vice-President: Kim Gross
Secretary: Angela Miller
Treasurer/Membership Chairman: Glen Johnston
Newsletter Editor: Christy Griffith
Publicity Chairman: Chuck Simmons
Webmaster: Stephen Nipper and Tren Long

Membership fees are an annual donation of \$20 (\$10 for 6 months March - August) to help promote the growth of the club, distribute newsletters, and provide benefits such as local aquarium store discounts, and bringing in expert speakers.



Meetings

Meetings are held the 2nd Tuesday of every month at 7:00 PM. Our next meeting will be our October meeting, October 12th at 7:00 PM at the ICRMP Building, 3100 S. Vista Ave, Boise. The topic is Phosban Reactors and Hair Algae Solutions. We hope to see you there.
cont. pg. 2